

INSTRUCTION GUIDE

Contents:



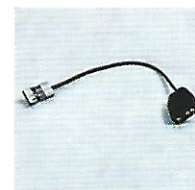
Controller



Molex 4pin



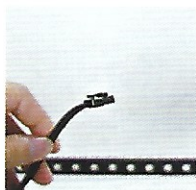
ARGB Connector and Fan PWM Connector



ARGB Connector for Gigabyte Motherboard



Fan Connector



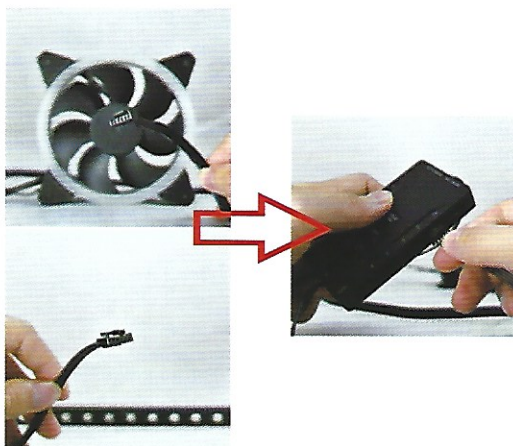
LED Strip Connector



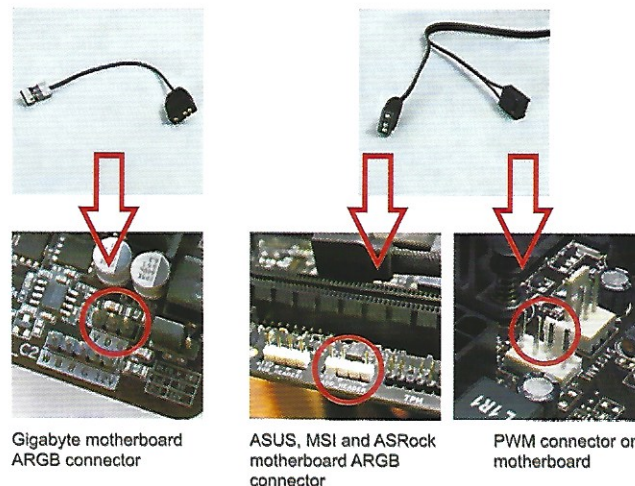
Remote Controller

Installation Instruction:

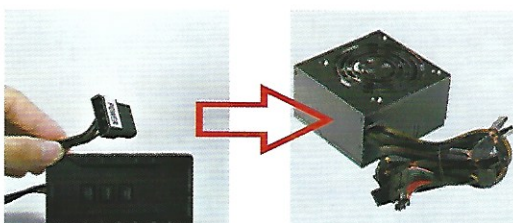
1) Connect fan and LED strip to the controller



2) Connect ARGB and PWM connector to the motherboard



3) Connect Molex 4pin of the controller to a power supply



4) Using the remote controller to operate



Select your favorite RGB mode or press "M/B sync" button to sync the motherboard RGB effects.